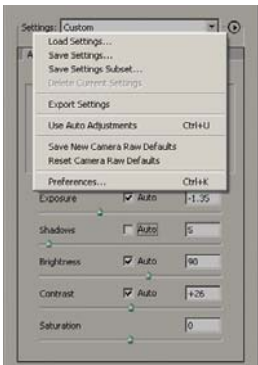
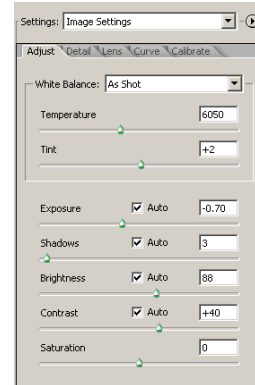


Camera RAW Settings

*Be careful of Camera Raw **STICKY** "Workflow Option" *(see below)*

Default Camera RAW "Image Settings":

- a. "Adjust" tab:
 - White Balance = "As Shot"
 - Exposure, Shadows, Brightness, Contrast = "Auto"
 - Saturation = "0"
- b. "Detail" tab:
- c. "Lens" tab:
- d. "Curve" tab:
- e. "Calibrate" tab:



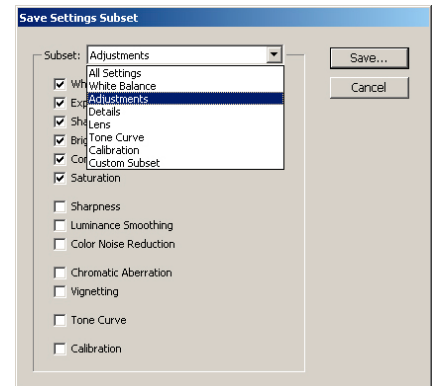
Optional Camera RAW Settings:

You can customize default values and "Save settings" as new Defaults but only if you have a real good reason. I recommend you change parameters then Save "Setting Subsets" and chose parameters to save. You can then apply these customized setting to those Camera Raw files that need something other than Default settings. (See examples below)

Subset Name:

"Adjust" Tab Settings: (save as Subset "Adjustments")

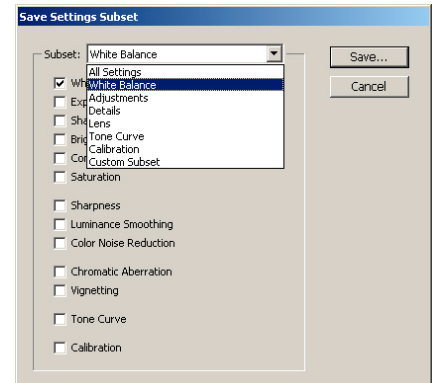
- _Manual *..... WB As Shot;
Exposure Shadows, Brightness, Contrast = Auto "OFF"
(necessary for brackets, pans, etc.)
- _Auto WB = As Shot;
Exposure, Shadows, Brightness, Contrast: = Auto "ON"
- WB_ Night WB = 3000; Exposure = 2.00;
Shadows & Brightness = Auto, Contrast: = +50



Subset Name:

"Adjust" Tab Settings: (save as Subset "White Balance")

- WB_As Shot WB = As Shot
- WB_Auto WB = Auto
- WB_D50 [Lightbox] WB: Temperature = 5000; Tint = 10
- WB_D55 [Daylight] WB = Daylight
- WB_D65 [Cloudy] WB = Cloudy
- WB_D75 [Shade] WB = Shade



* Camera Raw "Workflow Option" **STICKY** settings:

- Color Space: *Adobe 1998/ProPhoto ?* *Size: *not critical*
- Color Depth: *8 or 16 bit* *Resolution: *not critical*
- * I standardize to Size = "3MP" & Res. = "200 ppi", this creates an 8x10x150/200 ppi document
...this will be helpful to know when "Resampling" for image_OUTPUT