

# Photoshop Preferences

Yellow Highlights are Changes from Photoshop Defaults



## General:



Preferences

General

Color Picker: Adobe

Image Interpolation: Bicubic Sharper

UI Font Size: Medium

History States: 20

Options

<input type="checkbox"/> Export Clipboard	<input checked="" type="checkbox"/> Beep When Done
<input checked="" type="checkbox"/> Show Tool Tips	<input checked="" type="checkbox"/> Dynamic Color Sliders
<input checked="" type="checkbox"/> Zoom Resizes Windows	<input checked="" type="checkbox"/> Save Palette Locations
<input type="checkbox"/> Auto-Update Open Documents	<input type="checkbox"/> Use Shift Key for Tool Switch
<input checked="" type="checkbox"/> Show Menu Colors	<input type="checkbox"/> Automatically Launch Bridge
<input checked="" type="checkbox"/> Resize Image During Paste/Place	<input checked="" type="checkbox"/> Zoom with Scroll Wheel

☐ History Log

Save Log Items To: ☒ Metadata ☐ Text File ☐ Both

Edit Log Items: Sessions Only

Reset All Warning Dialogs

OK

Cancel

Prev

Next

Changes will take effect the next time you start Photoshop.

# Photoshop Preferences

Yellow Highlights are Changes from Photoshop Defaults

## File Handling:

The screenshot shows the 'Preferences' dialog box with the 'File Handling' section selected. The 'File Saving Options' group contains 'Image Previews' set to 'Always Save' and 'File Extension' set to 'Use Lower Case'. The 'File Compatibility' group has three checked options: 'Ignore EXIF profile tag', 'Ask Before Saving Layered TIFF Files', and 'Enable Large Document Format (.psb)'. The 'Maximize PSD and PSB File Compatibility' dropdown is set to 'Ask'. The 'Version Cue' group has 'Enable Version Cue Workgroup File Management' checked. At the bottom, the 'Recent file list contains' is set to '10' files. On the right side of the dialog are buttons for 'OK', 'Reset', 'Prev', and 'Next'.

Preferences

File Handling

File Saving Options

Image Previews: Always Save

File Extension: Use Lower Case

File Compatibility

☐ Ignore EXIF profile tag

☒ Ask Before Saving Layered TIFF Files

☒ Enable Large Document Format (.psb)

Maximize PSD and PSB File Compatibility: Ask

Version Cue

☒ Enable Version Cue Workgroup File Management

Recent file list contains: 10 files

OK

Reset

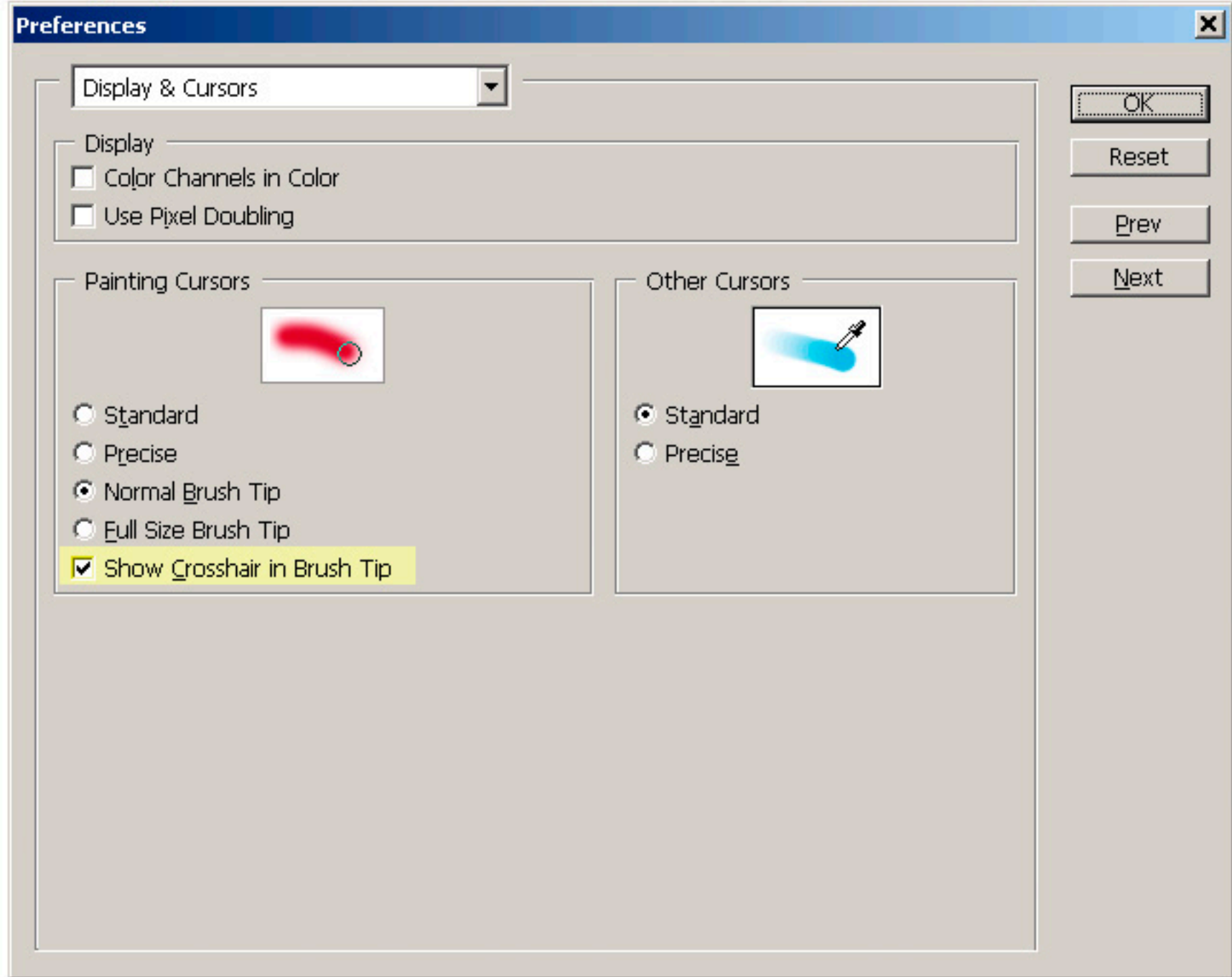
Prev

Next

# Photoshop Preferences

Yellow Highlights are Changes from Photoshop Defaults

## Display & Cursor:



# Photoshop Preferences

Yellow Highlights are Changes from Photoshop Defaults



## Plug-Ins & Scratch Disks:

Preferences

Plug-Ins & Scratch Disks

☐ Additional Plug-Ins Folder

<None> Choose...

Legacy Photoshop Serial Number:

Scratch Disks

First: D:\

Second: C:\

Third: None

Fourth: None

Scratch disks will remain in use until you quit Photoshop.

OK

Cancel

Prev

Next

# Photoshop Preferences

Yellow Highlights are Changes from Photoshop Defaults



## Memory & Image Cache:

Preferences

Memory & Image Cache

Cache Settings

Cache Levels: 6

Memory Usage

Available RAM: 1761MB - 200MB

Maximum Used by Photoshop: 89 % = 1567MB

Changes will take effect the next time you start Photoshop.

OK

Reset


Prev

Next

# Photoshop Color Settings

## Defaults

Color Settings



For more information on color settings, search for "setting up color management" in Help. This term is searchable from any Creative Suite application.

Settings: North America General Purpose 2

Working Spaces

RGB: sRGB IEC61966-2.1

CMYK: U.S. Web Coated (SWOP) v2

Gray: Dot Gain 20%

Spot: Dot Gain 20%

Color Management Policies

RGB: Preserve Embedded Profi...

CMYK: Preserve Embedded Profi...

Gray: Preserve Embedded Profi...

Profile Mismatches: ☐ Ask When Opening ☐ Ask When Pasting

Missing Profiles: ☐ Ask When Opening

Description

Working Spaces: The working space specifies the working color profile for each color model. (A color profile defines how a color's numeric values map to its visual appearance.) The working space is used for documents that are not color-managed, and for newly created documents that are color-managed.

OK

Reset

Load...

Save...

More Options


☒ Preview

# Photoshop Color Settings

## Option #1

Yellow Highlights are Changes from Photoshop Defaults

Color Settings



For more information on color settings, search for "setting up color management" in Help. This term is searchable from any Creative Suite application.

Settings: North America General Purpose 2

Working Spaces

RGB: Adobe (RGB 1998)

CMYK: U.S. Web Coated (SWOP) v2

Gray: Dot Gain 20%

Spot: Dot Gain 20%

Color Management Policies

RGB: Preserve Embedded Profi...

CMYK: Preserve Embedded Profi...

Gray: Preserve Embedded Profi...

Profile Mismatches: ☐ Ask When Opening ☐ Ask When Pasting

Missing Profiles: ☐ Ask When Opening

Description

Working Spaces: The working space specifies the working color profile for each color model. (A color profile defines how a color's numeric values map to its visual appearance.) The working space is used for documents that are not color-managed, and for newly created documents that are color-managed.

OK

Reset

Load...

Save...

More Options


☒ Preview

# Photoshop Color Settings

## Option #2

Yellow Highlights are Changes from Photoshop Defaults

Color Settings



For more information on color settings, search for "setting up color management" in Help. This term is searchable from any Creative Suite application.

Settings: North America Prepress 2

Working Spaces

RGB: Adobe (RGB 1998)

CMYK: U.S. Web Coated (SWOP) v2

Gray: Dot Gain 20%

Spot: Dot Gain 20%

Color Management Policies

RGB: Preserve Embedded Profi...

CMYK: Preserve Embedded Profi...

Gray: Preserve Embedded Profi...

Profile Mismatches: ☒ Ask When Opening ☒ Ask When Pasting

Missing Profiles: ☒ Ask When Opening

Description

Working Spaces: The working space specifies the working color profile for each color model. (A color profile defines how a color's numeric values map to its visual appearance.) The working space is used for documents that are not color-managed, and for newly created documents that are color-managed.

OK

Reset

Load...

Save...

More Options

☒ Preview